

## Kolga Model A320-1 One Liter Top Opening High Performance Low Background Lead Shield

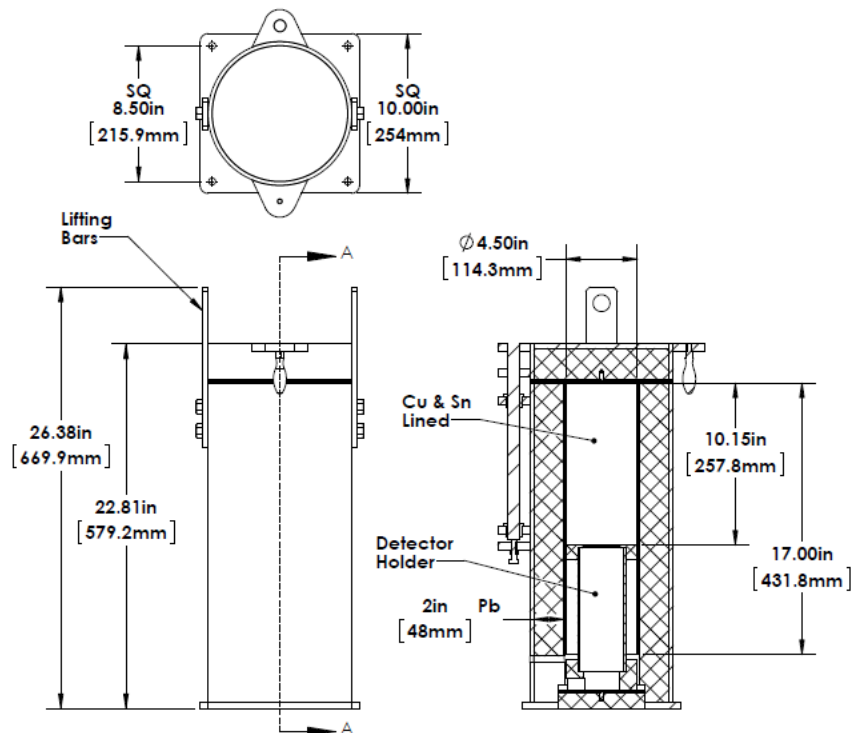
### Description

The Kolga Model A320-1 is a 5 cm (2 inch) thick high performance copper/tin lined lead shield for NaI detectors. The A320-1 shield is made from certified DOE Run virgin low background lead. The graded liner is designed for the suppression lead x-rays and consists of a tin layer of 1 mm (0.040 in.) covered by a oxygen free copper layer of 1.5 mm (0.06 in.). The shield includes a rigid mounting plate to secure the unit to the floor or table for safe operation. The shield can accept either a 2x2 or a 3x3 NaI detector which is inserted from the top opening into the detector holder for secure mounting. The A320-1 exterior and stand is coated with durable epoxy paint while all copper components are coated with a clear polyurethane sealer to prevent corrosion.



### Specifications

- Overall: Height 579 mm (22.81 in.)  
Width 254 mm (10 in.)
- Cavity: Diameter 114.3 mm (4.50 in.)  
Depth 432 mm (17.0 in.)
- Sample Depth 257.8 mm (10.15 in.)
- Outer Jacket - 6.35 mm (1/4 in.) thick low carbon steel.
- Shield - 50.8 mm (2 in.) thick certified low background lead.
- Graded Lining - 1 mm (0.040 in.) tin and 1.5 mm (0.06 in.) oxygen free copper.
- Weight 199 kg (437 lbs.)
- Finish Light Gray Epoxy Paint



## Kolga, LLC

Quality Lead Shield Products  
141 South Main Street  
Beacon Falls, CT 06403

Tel: 203-729-6800 ext.12  
Sales@kolgasield.com  
www.kolgasields.com  
9/15/2013 v05